



AI in Compliance

**Christian Stella PharmD, ABAHP,
FAAMM**

CEO, Founder

Precision Compounding Pharmacy

1

My big ask

Goal: Let's keep it simple



2

Change your thinking.....



perplexity

- Leadership sprint: How is everyone using AI at work?
- Understand AI
- AI is not going anywhere.



3

We have been at this for a bit.



Key Technological Milestones in Consumer Electronics and AI

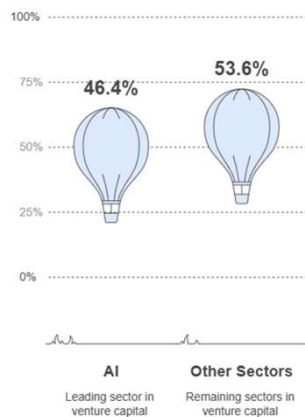


4

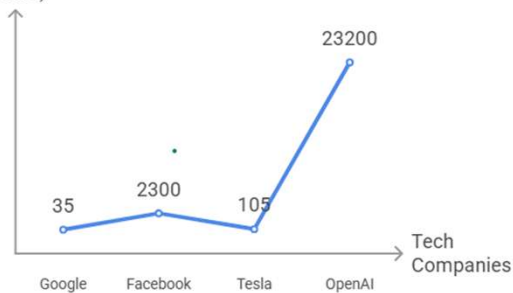
Funding Environment

Napkin

AI's Share in the 2019B Venture Capital Investments in 2024



Funds Raised (million dollars)



Total Funds Raised by Tech Companies



5

Understanding AI

MOA: Mechanism of Action



6

Simple Steps

- Data



- Training the models



- Computing Power



7

Data Labeling



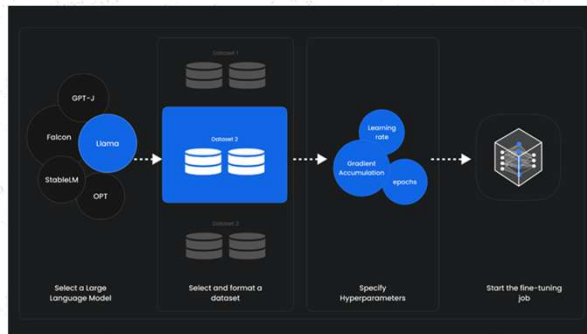
8

Models

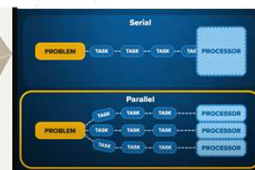
Recognizing Patterns based on a data set.

1950s: Chess-playing programs in the early

+ *apply different algorithms to relevant data inputs to achieve the tasks, or output, they've been programmed for.*



Computing Power



- GPU Graphic processing unit: Serial to parallel compute (X-Box)
- Nvidia (2006): CUDA - Computing programming model.
- Filled data centers of thousands Nvidia A100 the engines used to train openAI and google Bard










Personal Tools

What do we use today?



11

Personal/Team Tools

- Superhuman → Email 
- Arc → Browser 
- Perplexity → Search  perplexity
- Ambient → Leadership meetings COS (Zapier, Asana tasks)  ambient
- ChatGPT: Clinical database 
- Synthesia: Text to video → Training  synthesia
- Compounding AI Chat → Compliance  Compounding AI Chat



12

Healthcare Data



13

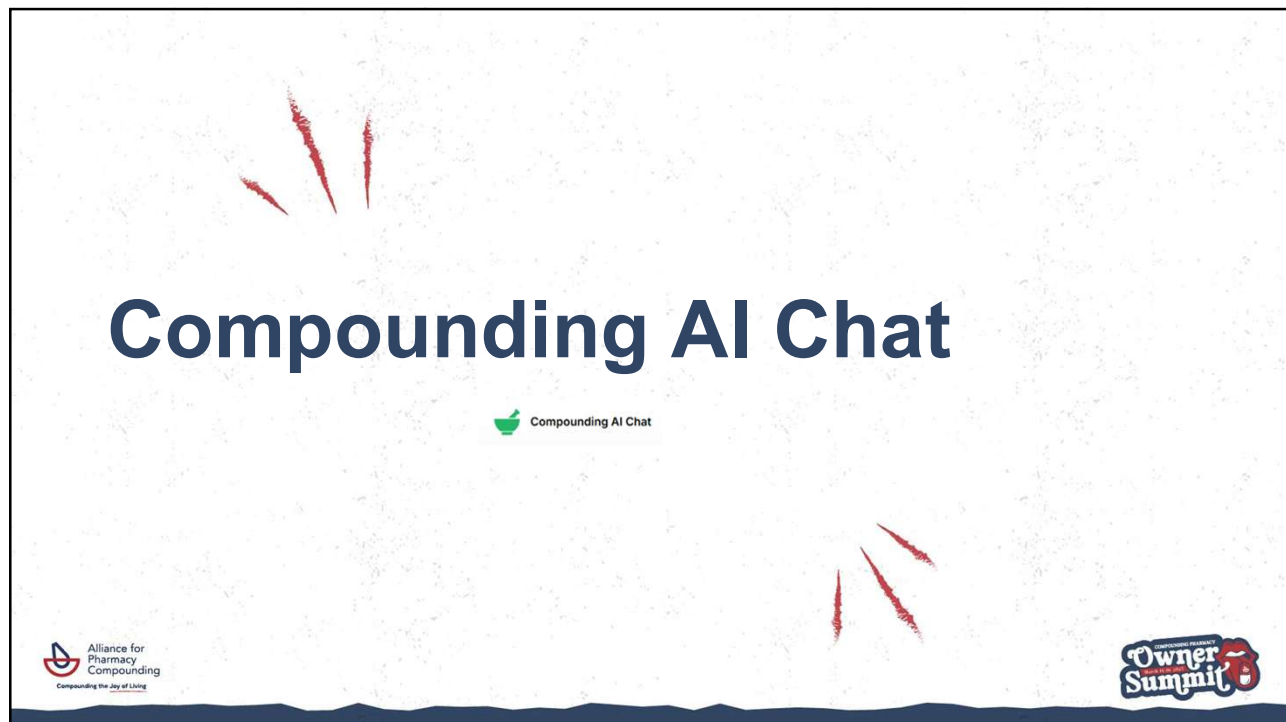
Healthcare Data

- Propriety
- HIPAA
- HL7 FHIR, Interoperability
- Servers

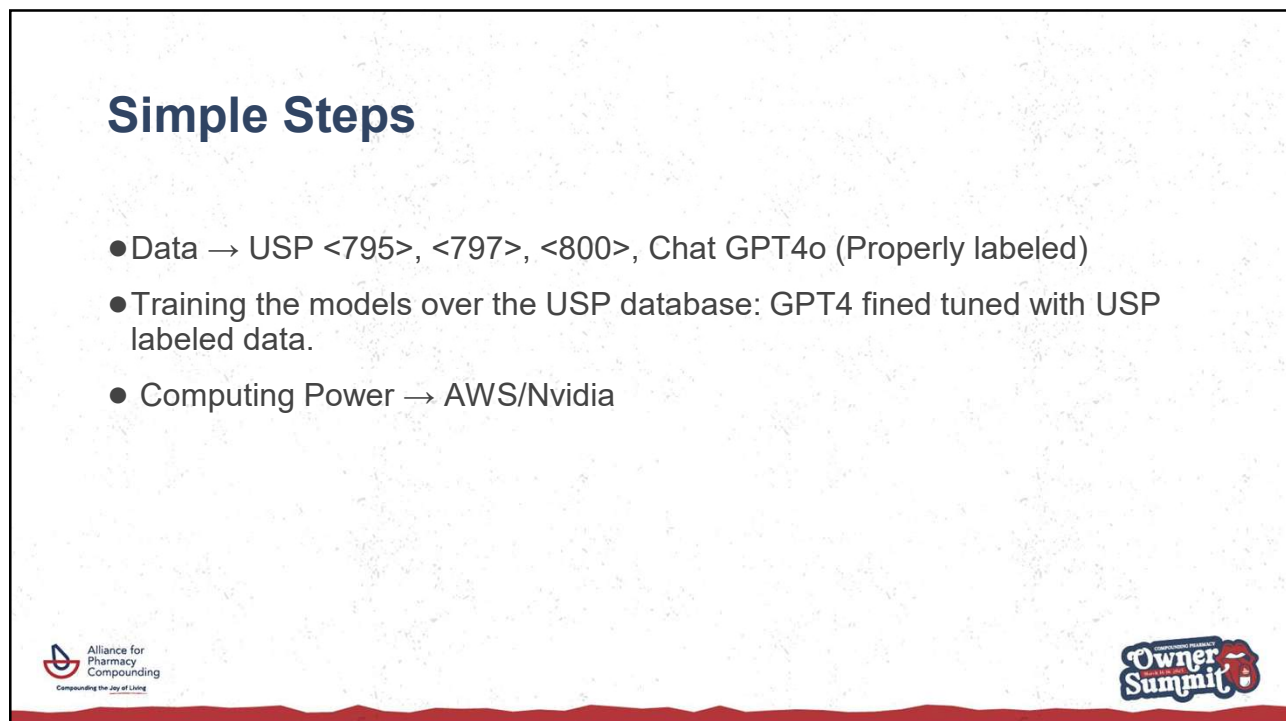
AI solutions in the future.



14



15



16

Breakdown

- Closed Source: Code is not available to public
- Closed system: Pharmacy Compounding data
- Using stripe for payment
- You can add your own policies (team or enterprise)
- Not using PHI



17

Pricing

Simple Transparent Pricing

AI technology keeps improving, and we are passing on savings to you. Here are our reduced pricing plans. Scroll down for APC PFM Member Discounts.

Individual	Team	Enterprise
\$100 per month	\$225 per month	\$325 per month
<ul style="list-style-type: none"> • 1 User • Unlimited Usage of the "Compounding AI" Chat • Unlimited Usage of GPT-4o Chat • No Onboarding Fee • Monthly Billing, Annual Agreement 	<ul style="list-style-type: none"> • 2-10 Users • Unlimited Usage of the "Compounding AI" Chat • Unlimited usage of the "Policy AI" Chat • Unlimited Usage of GPT-4o Chat • Onboarding fee: \$500 • Monthly Billing, Annual Agreement 	<ul style="list-style-type: none"> • 11-20 users • Unlimited Usage of the "Compounding AI" Chat • Unlimited usage of the "Policy AI" Chat • Unlimited Usage of GPT-4o Chat • Onboarding fee: \$500 • Monthly Billing, Annual Agreement

APC PFM Member Discounts

If you are an APC PFM Member we are offering waived onboarding fees & 20% off your subscription forever on the Team and Enterprise plans.

Individual	Team	Enterprise
\$100 per month	\$225 \$180 per month	\$325 \$260 per month
<ul style="list-style-type: none"> • 1 User • Unlimited Usage of the "Compounding AI" Chat • Unlimited Usage of GPT-4o Chat • No Onboarding Fee • Monthly Billing, Annual Agreement 	<ul style="list-style-type: none"> • 2-10 Users • Unlimited Usage of the "Compounding AI" Chat • Unlimited Usage of the "Policy AI" Chat • Unlimited Usage of GPT-4o Chat • Onboarding fee: \$500 \$0 • Monthly Billing, Annual Agreement 	<ul style="list-style-type: none"> • 11-20 users • Unlimited Usage of the "Compounding AI" Chat • Unlimited Usage of the "Policy AI" Chat • Unlimited Usage of GPT-4o Chat • Onboarding fee: \$500 \$0 • Monthly Billing, Annual Agreement



18

Pros

- Great for retail pharmacy looking to learn about compounding
- Great with compliance questions based on USP.

"I love it, I use it anytime I have questions" Justin Tamayo PCP's designated person.



19

Mid Range

- Great with Formulation questions (Can take fill void if you are not on formulation support with PCCA, Fagron, or Medisca)



20

Cons

- Not trained on NABP or state BOP law
- Not great for clinical questions



21

Example #1 (Yeww!)

I'm with the team, and we're about to gown up to enter the hazardous room (USP 800). Which type of gloves should we wear?

When entering a hazardous drug (HD) compounding area as per USP 800 guidelines, you must wear chemotherapy gloves that meet the American Society for Testing and Materials (ASTM) standard D6978 (or its successor). These gloves are specifically designed to resist permeability by hazardous drugs and provide protection during handling.

Key requirements for gloves in a hazardous compounding environment include:

1. **Chemotherapy Gloves** : These must be worn for handling all hazardous drugs, including non-antineoplastics and those with reproductive risks.
2. **Powder-Free** : Chemotherapy gloves must be powder-free to prevent contamination of the work area and to avoid adsorption and retention of hazardous drugs.
3. **Sterility** : When used for sterile compounding, the outer chemotherapy gloves must be sterile.
4. **Inspection** : All gloves must be inspected for holes, punctures, or tears before use and replaced immediately if any defects are detected.
5. **Changing Frequency** : Chemotherapy gloves should be changed every 30 minutes unless otherwise recommended by the manufacturer's documentation, and must be changed when torn, punctured, or contaminated.
6. **Double Gloving** : Two pairs of chemotherapy gloves are required for compounding sterile and nonsterile hazardous drugs.

Always adhere to your facility's Standard Operating Procedures (SOPs) for specific PPE requirements and ensure compliance with USP 800 guidelines to maintain safety and prevent contamination.



22

Example #2 (Ehhh)

A doctor has requested the preparation of an ointment containing benzocaine, lidocaine, and tetracaine. Which wetting agent would be most suitable for this formulation?

When preparing an ointment containing benzocaine, lidocaine, and tetracaine, the choice of a wetting agent is crucial to ensure proper incorporation of the active pharmaceutical ingredients (APIs) into the ointment base.

For such a formulation, glycerin is often a suitable wetting agent. Glycerin is commonly used in compounding to aid in the incorporation of powders into bases, especially when the powders are not readily soluble in the base. It helps to lower the surface tension and improve the contact between the solid particles and the liquid or semisolid base, facilitating a more uniform distribution of the APIs.

Additionally, glycerin is compatible with a variety of ointment bases, including those that are more water-miscible or water-soluble. This compatibility makes it a versatile choice for many topical formulations.

It's important to ensure that the wetting agent is compatible with both the active ingredients and the ointment base to avoid any stability issues or interactions that could affect the efficacy of the final product. Always refer to your facility's guidelines and the specific formulation requirements when selecting excipients for compounding.



23

Example #3 (No-go)

 Compounding AI Chat

We just got our New Jersey License! What should I know about shipping sterile compounds into that state?

Congratulations on obtaining your New Jersey license! When shipping sterile compounded preparations into New Jersey, there are several important considerations to keep in mind to ensure compliance with both state and federal regulations:

- Licensing and Registration** : Ensure that your pharmacy is properly licensed and registered with the New Jersey Board of Pharmacy. This includes any specific requirements for non-resident pharmacies if you are located outside of New Jersey.
- Compliance with USP Standards** : Adhere to the USP <797> standards for sterile compounding, which include guidelines for maintaining sterility, proper labelling, and documentation. These standards are critical for ensuring the quality and safety of compounded sterile preparations (CSPs).
- Labeling Requirements** : Ensure that all CSPs are labeled in accordance with New Jersey regulations. This includes providing information such as the name and strength of the preparation, beyond-use date, storage conditions, and any special handling instructions. The label should also indicate that the preparation is compounded.
- Shipping and Handling** : Follow proper shipping protocols to maintain the sterility and stability of the CSPs during transport. This includes using appropriate packaging materials and methods to protect the preparations from temperature extremes, physical damage, and contamination.
- Patient Counseling and Information** : Provide patients with necessary information about the compounded preparation, including usage instructions, potential side effects, and contact information for the pharmacy in case of questions or adverse reactions.
- Record Keeping** : Maintain comprehensive records of all compounded preparations shipped to New Jersey, including formulation details, quality control measures, and shipping documentation. This is important for both regulatory compliance and quality assurance.
- State-Specific Regulations** : Be aware of any additional state-specific regulations or requirements that may apply to the compounding and shipping of sterile preparations into New Jersey. It is advisable to consult with the New Jersey Board of Pharmacy or a legal expert specializing in pharmacy law to ensure full compliance.



24

Example #3 (No-go)

What are some state specific regulations for New Jersey?



This question is currently beyond the scope of my current data set, please refer to an industry expert.



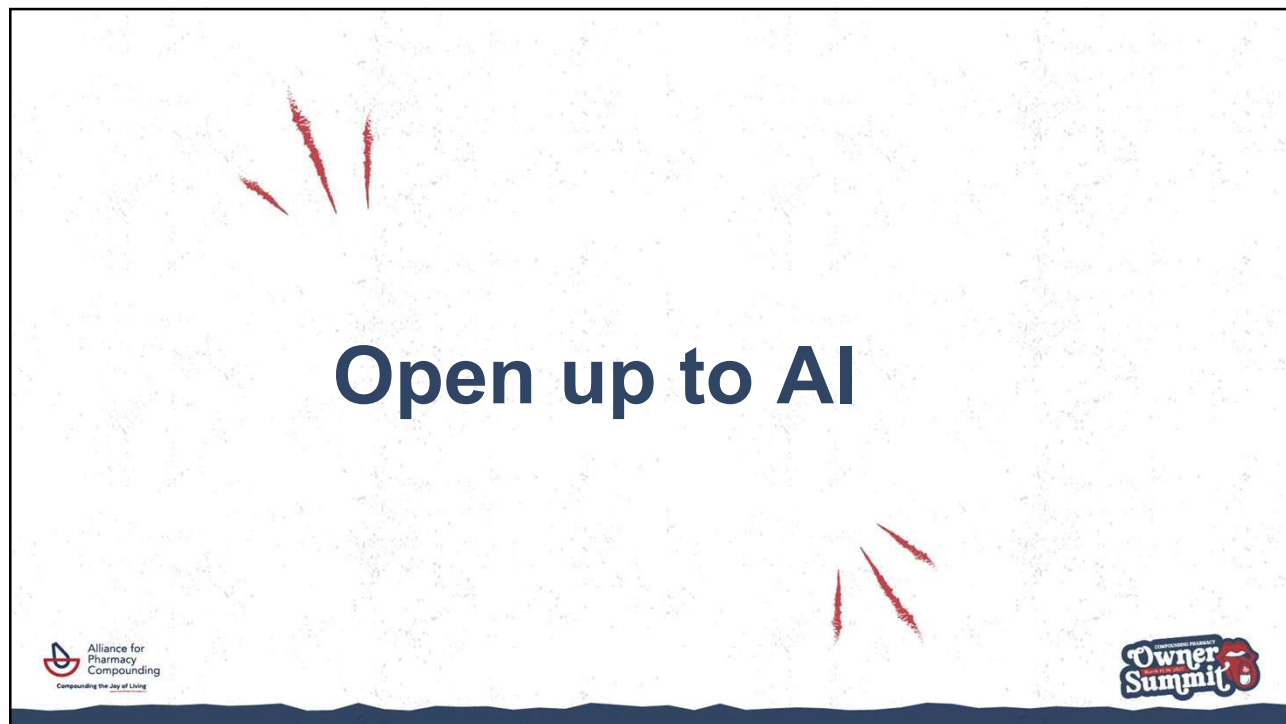
25

Compounding AI Chat Review

- Worth it! 100%
- Timesaver



26



27



28

Contact Information

Christian Stella PharmD, ABAHP, FAAMM

cstella@mypcphealth.com

Linkedin

